



HI-6K-SL Single Phase Super Hybrid Inverter



Inhenergy 6KW
Super Hybrid
Inverter

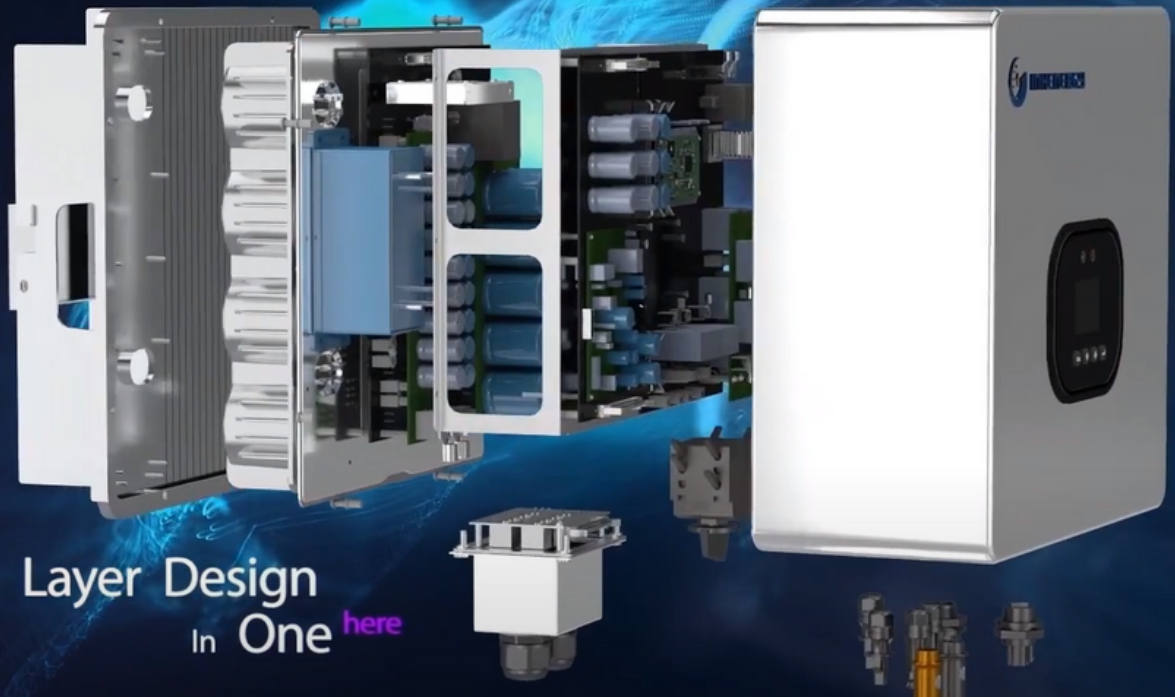
5 Year
Warranty

Smart | Reliable | Powerful



Features

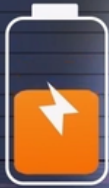
- High-Quality Fanless Design; IP65 Alloy enclosure; Full Auto-protection.
- Intelligent working modes - Self Consumption Mode; Charge Priority Mode; Peak-Load Shifting Mode. Customizable Time-of-use settings
- 11000W AC Input Passthrough Feature
- Massive PV Array of 9000W - Dual MPPT (MPPT Merge Function) 550Vdc @ 15A Current (30A in MPPT Parallel Mode)
- Generator Input - Frequency Range 45-65Hz
- Automatic Smart-UPS Switching in under 10ms
- Full Remote Monitoring & Control with Smart LCD Display - WiFi + APP
- Parallel x6 pcs (up to 36kW) 1Ph & 3Ph
- Battery bank share ON/OFF - Independent Battery Banks
- BMS Compatibility with all mainstream LiFePO4 & Lead Acid Batteries



Five Layer Design
In One *here*



Solar



Storage



7 Intelligent Working Modes

HIGH ADAPTABILITY

Support 2MPPT and 30A MPPT Current
Adapt to Large and Small Power PV Panels

Below 25dB

With Low Noise and Natural Heat Dissipation Design

Z

CURVED DESIGN

SMART CONTROL

Support DC Input **1.5x**
Over Configuration

INHERGENCY

NATURAL HEAT DISSIPATION

With low noise, it is more suitable for household appliances.

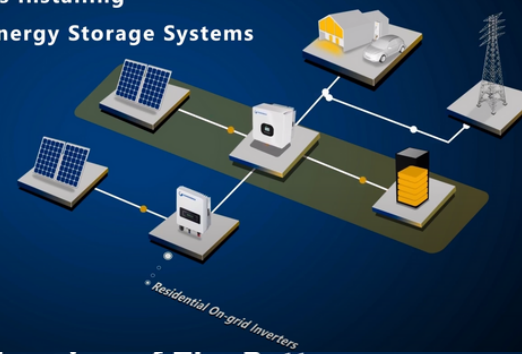
No Power Outage Anxiety

Used in Conjunction
with Generators



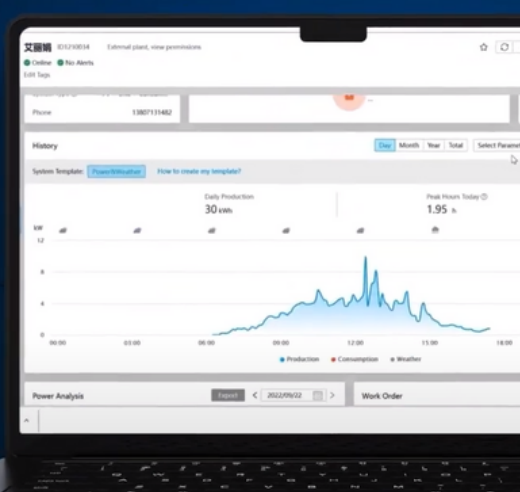
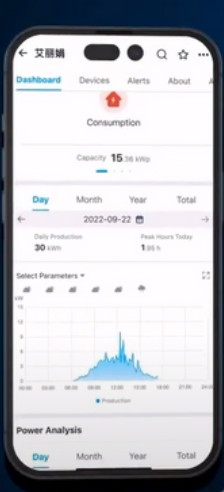
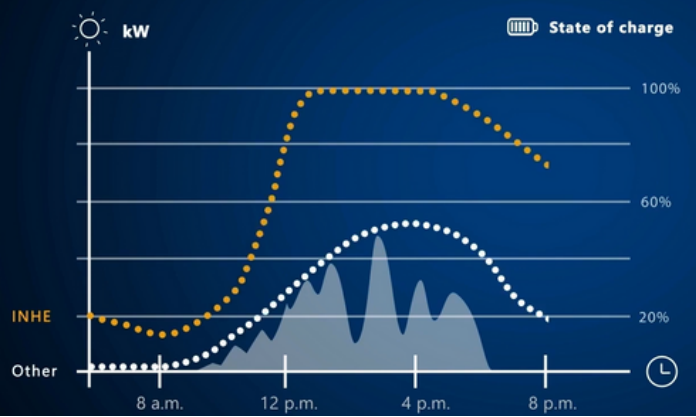
Collaborate with On-grid Inverters

Expansion of Customers Installing
On-grid Inverters to Energy Storage Systems



Extra Fast Charging of The Battery

Save More





PV String Input Data

Max DC Input Power	9000W
MAX DC Input Voltage	550V
Operation Voltage Range	80V-550V
MPPT Working Voltage Range	90V-550V
Number Of Independent MPPT/Strings per MPPT	2/1+1
MPPT Max Current	15A/15A (30A - MPPT Parallel Mode)
Start-Up Voltage/Min-Operating Voltage	100V/80V

AC Output/Input Data (On-Grid)

Nominal Output Apparent Power	6000VA
Max Output Apparent Power	6600VA
Nominal Output Voltage	230V/180-280V
Nominal Output Frequency	45Hz - 65Hz
Rated Output Current	26A
Max Output Current	29A
Power Factor	-0.8~+0.8 (Adjustable)
THDi	<3% (Nominal Output)
Grid System Pattern	L+N+PE
Max Apparent Power From Utility Grid	11000VA
Max AC Current From Utility Grid	48A

Back-Up Output Data (UPS)

Peak Output Apparent Power	7000VA (10s)
Nominal Output Apparent Power	6000VA
Nominal Output Voltage	208V; 220V; 230V; 240V
Nominal Output Frequency	50Hz/60Hz
Output THDV	<3%
Automatic Switchover Time	<10ms

Battery Input Data

Battery Type	LiFePO4 / Lead-Acid
Nominal Battery Voltage	48V
Battery Voltage Range	42-59V
Max Charging Voltage	58V (Configurable)
Max Charge/Discharge Current	100A
Battery Capacity (Ah)	50Ah - 2000Ah
Charging Strategy for LiFePO4 Battery	Self-Adaptation to BMS
Charging Strategy for Lead-Acid Battery	Three-Stage

Efficiency

Max Efficiency	98%
Europe Efficiency	97.5%
Max Battery to Load Efficiency	94%

Protection

Anti Islanding Protection | Insulation Impedance Protection | RCD Detection | PV Reverse Polarity Protection | Output Over Voltage Protection | Output Over Current Protection

General Data

Dimensions	375 (W) x 365 (L) x 250 (H)
Weight	20KG
Noise	<25dB
Operation Temperature Range	-25C~+60C
Heat Dissipation Mode	Natural Convection
IP Class	IP65
Maximum Altitude	4000m
Self-Consumption Night	<3w
Topology	Transformerless

Features

LCD Display	Yes
Communication Interface	WiFi 4G USB CAN RS485

Standards NRS 097-2-1/EN 62109-1/EN 62109-2/EN 62477-1/IEC 61000-6-1/IEC 61000-6-3/CEI 0-21/UNE 217001/UNE 217002/VDE 0126/IEC 61727/IEC 62116/EN 50549-1/G98/G99/AS 4777.2